

The structure of cosmic strings of a U(1) gauge field for the conservation of $B - L$

V. Muñoz-Vitelly, J. A. García-Hernández, and W. Bietenholz

*Instituto de Ciencias Nucleares, Universidad Nacional Autónoma de México
Apartado Postal 70-543, Ciudad de México, 04510, México*

Received 24 January 2022; accepted 23 February 2022

We consider an extension of the Standard Model, where the difference between the baryon number B and the lepton number L is gauged with an Abelian gauge field, in order to explain the exact conservation of $B - L$. To avoid a gauge anomaly, we add a right-handed neutrino ν_R to each fermion generation. Here it is not sterile, so the usual Majorana term is excluded by gauge invariance. We provide a mass term for ν_R by adding a non-standard 1-component Higgs field, thus arriving at a consistent extension of the Standard Model, where the conservation of $B - L$ is natural, with a modest number of additional fields. We study the possible formation of cosmic strings by solving the coupled field equations of the two Higgs fields and the non-standard U(1) gauge field. Numerical methods provide the corresponding string profiles, depending on the Higgs winding numbers, such that the appropriate boundary conditions in the string center and far from it are fulfilled.

Keywords: Cosmic strings; baryon and lepton number; non-standard Higgs field.

DOI: <https://doi.org/10.31349/SuplRevMexFis.3.020713>

1. A modest extension of the Standard Model

The Standard Model of particle physics is a major scientific achievement of the 20th century, and of all times — many of its predictions have been confirmed to an enormous precision. Still there are some reservations about it, which often refer to the missing inclusion of gravity and Dark Matter. Here we take a different point of departure to motivate a possible extension beyond the Standard Model.

Since the 20th century, symmetries are a central concept of physics. They can be divided into global and local symmetries. We consider the latter equivalent to gauge symmetries, which must be exact based on the foundation of gauge invariance. This property strongly constrains the options of consistent extensions beyond the Standard Model, because one has to assure that the gauge anomalies still cancel.

On the other hand, there is no compelling reason for global symmetries to be exact. Indeed, they are usually just approximately valid in some energy regime, where symmetry breaking terms are hardly manifest, although they exist at a higher energy scale. An exception is Lorentz invariance, which — along with locality — also implies CPT invariance, but if we invoke gravity (as described by General Relativity), it turns into a local symmetry, which is naturally exact.

Another exception, which does not have such a plausibility argument, is the difference between the baryon number B and the lepton number L . Experimentally no violation of B or L has ever been observed, but the Standard Model allows for transitions, which turn quarks into leptons or vice versa. They are based on topological windings of the Yang-Mills gauge field $SU(2)_L$, which affect both the left-handed quark and lepton-doublets. However, this simultaneous effect still keeps the difference $B - L$ invariant. This is manifest from the fact that the divergences of the baryon current J_μ^B and the lepton current J_μ^L coincide,

$$\partial^\mu J_\mu^B = \partial^\mu J_\mu^L = -\frac{N_g}{32\pi^2} \text{Tr} [W^{\mu\nu} \tilde{W}_{\mu\nu}], \quad (1)$$

where $W^{\mu\nu}$ is the $SU(2)_L$ field strength tensor, $\tilde{W}_{\mu\nu} = \epsilon_{\mu\nu\rho\sigma} W^{\rho\sigma}$ and N_g is the number of fermion generations.

$B - L$ invariance is not a paradox, but it appears strange that this global symmetry should be “accidentally” exact. This is the conceptually unsatisfactory point that we try to overcome by going a step beyond the Standard Model. However, we do so in an economic way, by essentially introducing just the minimum of additional ingredients which are necessary to render consistency and some natural features.

Our economic approach proceeds in three steps, which we first describe in words.

- We promote the $B - L$ invariance to a gauge symmetry, which corresponds to an Abelian Lie group $U(1)_{Y'}$, and we denote its gauge field as \mathcal{A}_μ . Thus the gauge group structure of the Standard Model is extended to $SU(3)_c \otimes SU(2)_L \otimes U(1)_Y \otimes U(1)_{Y'}$, with dimension 13 and rank 5. \mathcal{A}_μ could couple just to $B - L$, or to a linear combination of the charges Y and $B - L$, which are both conserved. We write it as

$$Y' = 2hY + \frac{h'}{2}(B - L), \quad (2)$$

where h and h' are coupling constants (the factors of 2 and 1/2 will be convenient later). It will become massive (see below), which leads to a heavy Z' -boson, while $SU(2)_L \otimes U(1)_Y$ gives rise to the standard gauge bosons W^\pm , Z and γ , as usual.

- With this additional field, and the quarks and leptons of the (traditional) Standard Model, a gauge anomaly emerges. This can easily be seen from a fermionic triangular diagram, with a gauge coupling to the charge

$B - L$ at each vertex, as illustrated in Fig. 1. In each fermion generation, we have 2 quark flavors, with a left- and right-handed quark and 3 colors, and baryon number $B = 1/3$, which sums up to $B = 4$. In the lepton sector we have one lepton with both chiralities, but only a left-handed neutrino, all with lepton number $L = 1$, which amounts to $L = 3$. Cancellation can be achieved by adding another lepton to each generation, and the obvious scenario is the inclusion of a right-handed neutrino ν_R .

It is well-known that this neutrino is “sterile” in the sense that it does not couple to gauge fields of the Standard Model. So it does not affect the anomaly cancellations with respect to the Standard Model gauge fields. It is also welcome in other respects: it provides the possibility to include a neutrino mass, while maintaining renormalizability, and it is even a candidate for Dark Matter.

- With ν_R included in each generation, we can build Dirac mass terms for the neutrinos, with the same structure as for the quark flavors u , c and t , by a Yukawa coupling of ν_L and ν_R to the standard Higgs doublet field Φ .

Once ν_R is present, it is natural for it to have also a Majorana-type mass term, which is independent of ν_L . However, in this scenario the usual Majorana term cannot be added to the Lagrangian: it is built solely from two factors of ν_R , hence it has $L = 2$. In other scenarios this is allowed, but in our case this term is not $U(1)_{Y'}$ gauge invariant.

In order to be able to construct a Majorana-type (purely right-handed) neutrino mass term, we still add a non-standard Higgs field χ . In the framework of our economic approach, we assume a 1-component complex scalar field, $\chi \in \mathbb{C}$. Now we can add a Majorana-Yukawa term $\propto \chi \nu_R^T + \text{c.c.}$ in each generation, and gauge invariance holds if χ carries the quantum number $B - L = 2$ (B and L do not need to be specified separately).

Like the standard Higgs field $\Phi \in \mathbb{C}^2$, χ can be applied to give mass to ν_R in all fermion generations, and it has a quartic (renormalizable) potential. This potential gives rise to spontaneous symmetry breaking, with a large vacuum expectation value (VEV) v' , which arranges for a heavy Z' -boson.

Finally, it is also natural to include a mixed Higgs term $\propto \Phi^\dagger \Phi \chi^* \chi$.

So we have designed a modest extension of the Standard Model, with one additional Abelian gauge field \mathcal{A}_μ , a right-handed neutrino ν_R in each fermion generation, plus a 1-component non-standard Higgs field χ . Each of these fields is hypothetical, but they have a clear motivation, as we pointed out above.

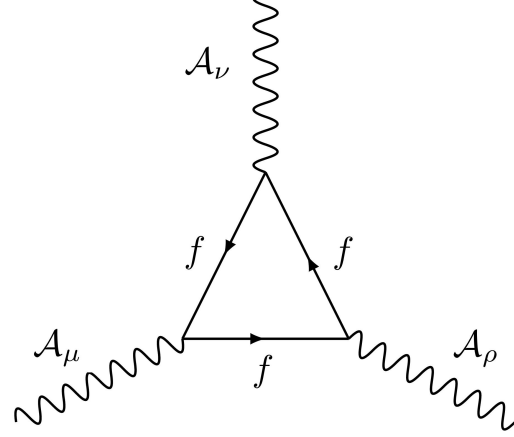


FIGURE 1. A fermionic triangle diagram, where f runs over all fermions involved. Their couplings to the external legs \mathcal{A}_μ , \mathcal{A}_ν , \mathcal{A}_ρ depend on the quantum number $B - L$.

If we want to embed this model into a Grand Unified Theory (GUT), we cannot use the unified gauge group $SU(5)$, which only has rank 4, so the simplest and obvious choice is $SO(10)$ [1]. In this framework, the non-standard hypercharge Y' takes the specific form [2]

$$Y' = Y - \frac{5}{4}(B - L), \quad (3)$$

which we will consider below. This form fulfills the orthonormality conditions $\sum_f Y_f Y'_f = 0$, $\sum_f Y_f^2 = 2/3 \sum_f Y'^2_f = (10/3)N_g$, where the sums run over all fermions [2].

A fully-fledged quantum field analysis of this model is beyond the scope of this work. We are going to discuss numerical solutions to the coupled field equations of the two Higgs fields and the $U(1)_{Y'}$ gauge field (without including fermions and standard gauge fields; fermionic contributions to cosmic strings are discussed *e.g.* in Ref. [3]). In this semiclassical analysis, we are interested in the possible formation of cosmic strings due to topological defects, where the two Higgs fields may have arbitrary (integer) winding numbers. Before explicitly addressing the corresponding field equations, we insert some general remarks about cosmic strings.

2. Topological defects and cosmic strings

Topological defects are relevant in a variety of condensed matter systems, as reviewed *e.g.* in Ref. [4]. They appear for instance in type II superconductors [5], and in some cases their percolation is related to a phase transition.

The possibility of the mathematically analogous formation of cosmic strings was first considered by Kibble in 1976 [6]. This scenario has attracted attention ever since, although there is no evidence so far for the physical existence of cosmic strings (bounds on the string tension are obtained in particular from the Cosmic Microwave Background [7]). The recent search for evidence of cosmic strings focuses on the detection of gravitational waves [8].

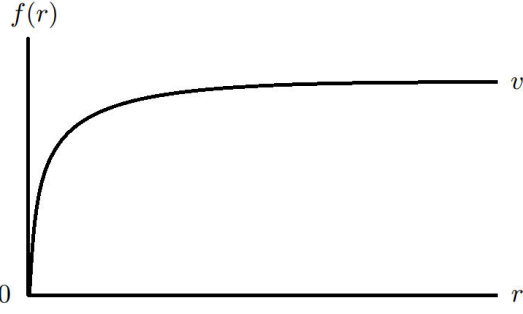


FIGURE 2. A prototype profile function $f(r)$ of a cosmic string, with a topological defect at $r = 0$, and $f(r \rightarrow \infty) = v$ (in cylindrical coordinates).

Regarding the early Universe, there are attempts to relate cosmic strings with the electroweak phase transition (the electroweak symmetry remains unbroken in the core) [9]. For a stability discussion of electroweak strings, see *e.g.* Ref. [10].

Cosmic strings could also be superconducting [11], which would establish a direct link to condensed matter physics.

Here we briefly sketch the basic idea; for extensive reviews we refer to Refs. [12, 13]. As a toy model, we consider a 1-component complex scalar field $\phi(x)$, with the well-known Lagrangian

$$\mathcal{L}(\phi, \partial_\mu \phi) = \partial_\mu \phi \partial^\mu \phi - \mu_0^2 \phi^* \phi - \lambda_0 (\phi^* \phi)^2. \quad (4)$$

For $\mu_0^2 < 0$ we obtain a continuous set of classical vacua,

$$\phi = v e^{i\alpha}, \quad v = \sqrt{-\mu_0^2/2\lambda_0}, \quad (5)$$

with an arbitrary phase $\alpha \in (-\pi, \pi]$. It can be generalized to static solutions with non-minimal energy, for which we write — in cylindrical coordinates — the ansatz

$$\phi(r, \varphi, z) = f(r) e^{in\varphi}, \quad (6)$$

where $n \in \mathbb{Z}$ is the winding number. For $n \neq 0$ this represents a topological defect, and the profile function $f(r)$ should vanish at $r = 0$ (this avoids a phase ambiguity). Far from this defect we require $f(r \rightarrow \infty) = v$. These are the boundary conditions for the field equation

$$\frac{d^2 f}{dr^2} + \frac{1}{r} \frac{df}{dr} = \left(\frac{n^2}{r^2} + \mu_0^2 + 2\lambda_0 \right) f. \quad (7)$$

The shape of a typical solution is depicted in Fig. 2.

3. Field equations for the extended gauge-Higgs sector

According to the description in Section 1, we consider the gauge-Higgs Lagrangian

$$\mathcal{L} = D_\mu \Phi^\dagger D^\mu \Phi + d_\mu \chi^* d^\mu \chi$$

$$- \frac{1}{4} \mathcal{F}_{\mu\nu} \mathcal{F}^{\mu\nu} - V(\Phi, \chi),$$

$$\mathcal{F}_{\mu\nu} = \partial_\mu \mathcal{A}_\nu - \partial_\nu \mathcal{A}_\mu,$$

$$V(\Phi, \chi) = \mu^2 \Phi^\dagger \Phi + \lambda (\Phi^\dagger \Phi)^2 + \mu'^2 \chi^* \chi + \lambda' (\chi^* \chi)^2 - \kappa \Phi^\dagger \Phi \chi^* \chi. \quad (8)$$

The potential must be bounded from below, which requires $\lambda, \lambda' > 0$, and $\kappa < 2\sqrt{\lambda\lambda'}$. Spontaneous symmetry breaking of both Higgs fields, with VEVs $v, v' > 0$, further requires

$$\mu^2, \mu'^2 < 0, \quad \kappa > \max\left(-\frac{2\mu^2\lambda'}{\mu'^2}, -\frac{2\mu'^2\lambda}{\mu^2}\right). \quad (9)$$

Together this implies $\kappa^2 < 4\lambda\lambda'$.

Φ and χ are the standard and non-standard Higgs fields, with the charges $Y_\Phi = 1/2$, $(B - L)_\chi = 2$, hence (ignoring the $SU(2)_L$ and $U(1)_Y$ gauge fields) the covariant derivatives take the form

$$D_\mu \Phi = \partial_\mu \Phi + ih \mathcal{A}_\mu \Phi, \quad d_\mu \chi = \partial_\mu \chi + ih' \mathcal{A}_\mu \Phi, \quad (10)$$

where we refer to our convention (2).

Following the lines of Sec. 2, we make an ansatz for static solutions in terms of cylindrical coordinates,

$$\Phi = \begin{pmatrix} 0 \\ 1 \end{pmatrix} \phi(r) e^{in\varphi}, \quad \chi = \xi(r) e^{in'\varphi}, \quad \mathcal{A}_\mu = \frac{a(r)}{r} \hat{\varphi},$$

where $\phi, \xi, a \in \mathbb{R}$ are the radial profile functions of the field configurations, $n, n' \in \mathbb{Z}$ are the winding numbers of the two Higgs fields, and $\hat{\varphi}$ is the tangential unit vector.

In these terms, the Euler-Lagrange field equations read [4, 14]

$$\begin{aligned} \frac{d^2 \phi}{dr^2} + \frac{1}{r} \frac{d\phi}{dr} &= \left[\frac{(n + ha)^2}{r^2} + \mu^2 + 2\lambda\phi^2 - \kappa\xi^2 \right] \phi, \\ \frac{d^2 \xi}{dr^2} + \frac{1}{r} \frac{d\xi}{dr} &= \left[\frac{(n' + h'a)^2}{r^2} + \mu'^2 + 2\lambda'\xi^2 - \kappa\phi^2 \right] \xi, \\ \frac{d^2 a}{dr^2} - \frac{1}{r} \frac{da}{dr} &= 2h\phi^2(n + ha) + 2h'\xi^2(n' + h'a). \end{aligned} \quad (11)$$

The boundary conditions in the core and asymptotically far from it — where the Higgs profile functions become constant — are summarized in the following table.

	$r = 0$	$r \rightarrow \infty$
$\phi(r)$	0 (if $n \neq 0$)	$v = \sqrt{-\mu^2/2\lambda}$
$\chi(r)$	0 (if $n' \neq 0$)	$v' = \sqrt{-\mu'^2/2\lambda'}$
$a(r)$	0	$-n/h = -n'/h'$ (if $n \neq 0$ and $n' \neq 0$)

4. Profiles of $U(1)_{Y'}$ cosmic strings

In the following we are going to show a set of solutions to the system of coupled second order differential equations given in Eq. (11). They are based on Refs. [4, 14], and obtained with the Python function `scipy.integrate.solve_bvp`, which applies the damped Newton method. Consistency tests show that the errors occur mostly close to $r = 0$ (where we have to deal with removable singularities), but even there they attain at most $\mathcal{O}(10^{-3})$, and for $r \geq \mathcal{O}(1)$ they decrease by several orders of magnitude. The solutions have also been reproduced with the Relaxation method and with the Runge-Kutta 4-point method, although the latter has difficulties in attaining stable plateaux at large r .

A solution is uniquely specified when we fix the Higgs self-couplings λ and λ' , the Higgs field winding numbers n and n' and the asymptotic large- r values of the three fields. We choose them by fixing directly v and v' , as well as the gauge couplings h and h' , with the constraint $n/h = n'/h'$, which is given in the table of Sec. 3, and which is obvious from the last line in Eq. (11).

In Figs. 3 to 5 we choose the parameters of the Higgs potentials as

$$v = 0.5, v' = 1, \quad \lambda = \lambda' = 1, \quad \kappa \in [-1, 1]. \quad (12)$$

Thus the non-standard Higgs field has a larger VEV than the one of the Standard Model (in physical units: $v \simeq 246$ GeV), hence the Z' -boson tends to be heavy, although this also depends on its coupling constants h and h' . The parameter κ is in the range, which is allowed by the condition for the potential to be bounded from below, $\kappa < 2$.

If we take the value of v as a reference to convert all quantities to physical units, then the length unit of r corresponds to 0.0008 fm, so our cosmic string solutions have radii of $\mathcal{O}(10^{-3})$ fm, as the following figures show, while other theoretical scenarios arrive at larger radii up to $\mathcal{O}(1)$ fm.

Figure 3 shows the case where \mathcal{A}_μ only couples to the charge $B - L$, hence $\phi(r = 0)$ does not need to vanish. We

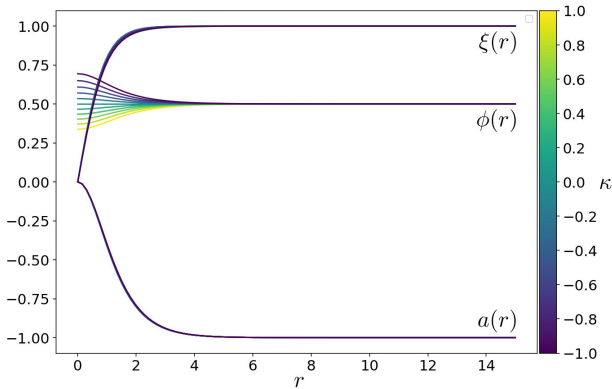


FIGURE 3. Solutions for the cosmic string profile functions, with static fields Φ, χ and \mathcal{A}_μ , in cylindrical coordinates, for the parameter set $v = 0.5, v' = 1; \lambda = \lambda' = 1; n = 0, n' = 1; h = 0, h' = 1$.

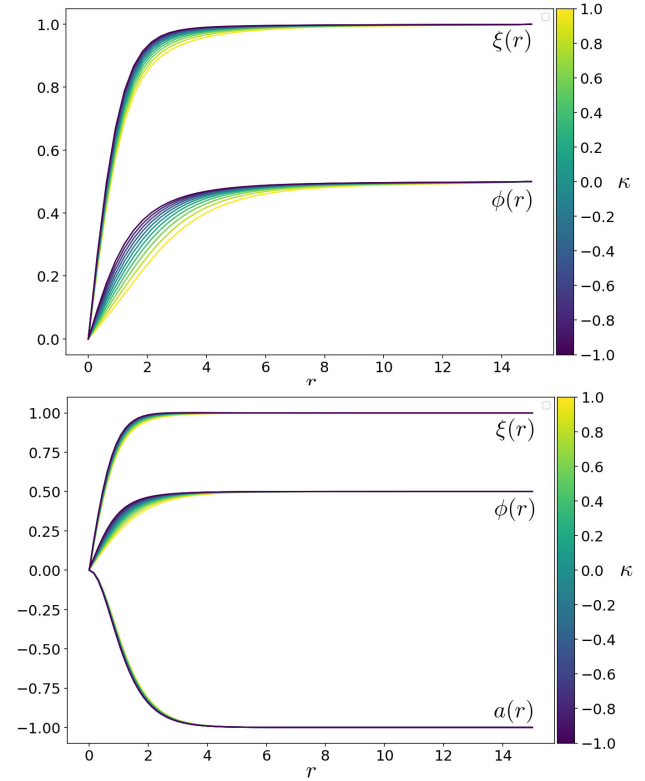


FIGURE 4. Solutions for the cosmic string profile functions, with static fields Φ, χ , in the absence (above) or presence (below) of a (static) $U(1)_{Y'}$ gauge field \mathcal{A}_μ . These plots refer to the parameter set $v = 0.5, v' = 1; \lambda = \lambda' = 1; n = n' = 1; h = h' = 1$.

see that it deviates only mildly from $\phi(r \rightarrow \infty) = v$, but only for $\phi(r \lesssim 4)$ the value of κ is relevant. Here $a(r \rightarrow \infty)$ is fixed by choosing the χ -winding number $n' = 1$, and the coupling $h' = 1$. The profile functions $\xi(r)$ and $a(r)$ move from 0 to their large- r values in a manner, which is qualitatively compatible with the feature of the prototype in Fig. 2.

In Fig. 4 we proceed to the winding numbers $n = n' = 1$. This requires the same couplings, which we choose as $h = h' = 1$. Here we show the cases without or with the presence of the \mathcal{A}_μ gauge field, *i.e.* $B - L$ conservation is a global or a local symmetry, respectively. The behavior of $\xi(r)$ and $\phi(r)$ is similar in these two cases, but the $U(1)_{Y'}$ gauge symmetry causes a faster convergence to the large- r limit as r increases, *i.e.* it reduces the characteristic string radius, and it suppresses the κ -dependence.

In Fig. 5 we consider a higher winding number of the χ -field, $n' = 2$, again for the cases of a global and local $B - L$ -symmetry. (We recall that the conservation of the weak hypercharge Y is local in any case due to the gauge group $U(1)_Y$, which is always present, although it is not included in our field equation analysis.) The impact of the $U(1)_{Y'}$ gauge group is consistent with Fig. 4; it accelerates the convergence of $\xi(r)$ and $\phi(r)$ to their plateau values as r increases, and it reduces to impact of the Φ - χ -mixing term, *i.e.* of the parameter κ .

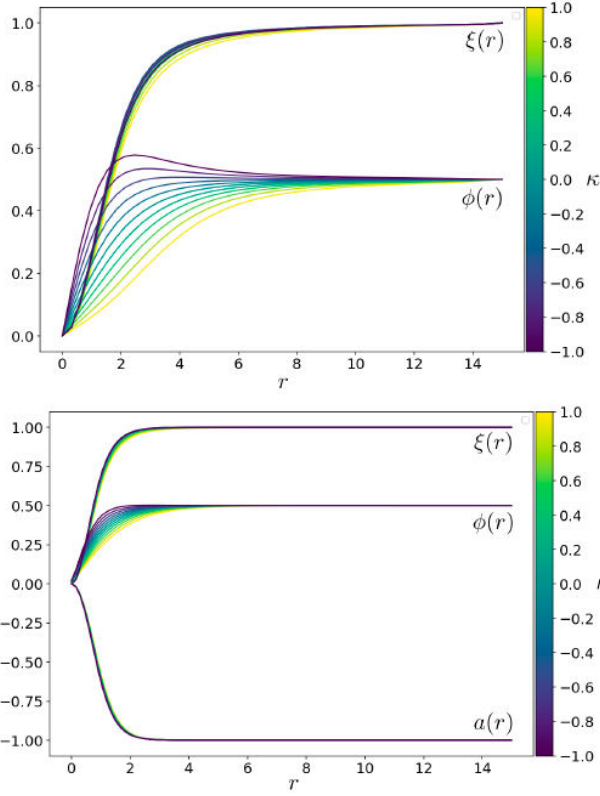


FIGURE 5. Solutions for the cosmic string profile functions, with static fields Φ , χ , in the absence (above) or presence (below) of a (static) $U(1)_{Y'}$ gauge field \mathcal{A}_μ . These plots refer to the parameter set $v = 0.5, v' = 1; \lambda = \lambda' = 1; n = 1, n' = 2; h = 1, h' = 2$.

In the global symmetry case, the latter is most relevant around $r \approx 2$, where we observe an interesting phenomenon: the standard Higgs profile can *overshoot*, *i.e.* exceed the value of v at a moderate radius r . In addition, we see at small $r \in \mathcal{O}(0.1)$ that $n' = 2$ keeps $\xi(r)$ small, in particular in the absence of \mathcal{A}_μ , before it turns to the regime of maximal slope at $r \in \mathcal{O}(1)$. We will come back to this point.

Figures 6 and 7 go beyond the parameter set (12) by enhancing the ratio v'/v and assuming different Higgs field self-couplings,

$$v = 0.5, v' = 1.5, \quad \lambda = 0.5, \lambda' = 1, \quad \kappa \in [-1, 1]. \quad (13)$$

Figure 6 refers to the case $n = n' = 1$, but we also modify the couplings compared to Fig. 4. The condition is only that they have to coincide, so we now set them to $h = h' = 0.5$. The qualitative features agree with Figs. 3 to 5, in particular in the presence of the gauge field \mathcal{A}_μ , which shows that these features are quite robust against parameter modifications.

Figure 7 returns to the case of the double winding of the χ -field, with $n = 1, n' = 2; h = 0.5, h' = 1$. This plot shows in particular that the overshooting effect of the profile $\phi(r)$ can also occur in the presence of the $U(1)_{Y'}$ gauge field, which strengthens the relevance of this observation.

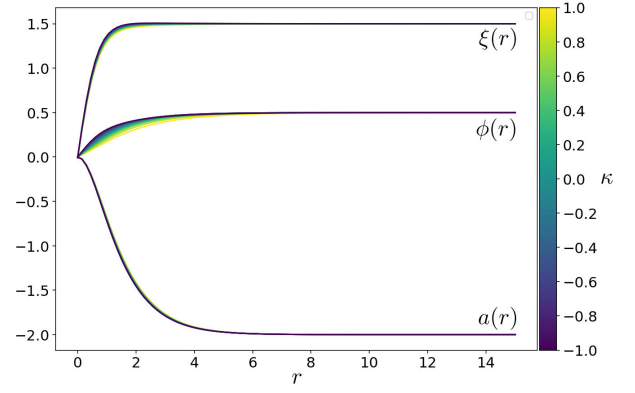


FIGURE 6. Solutions for the cosmic string profile functions, with static fields Φ , χ and \mathcal{A}_μ , for the parameter set $v = 0.5, v' = 1.5; \lambda = 0.5, \lambda' = 1; n = n' = 1; h = h' = 0.5$.

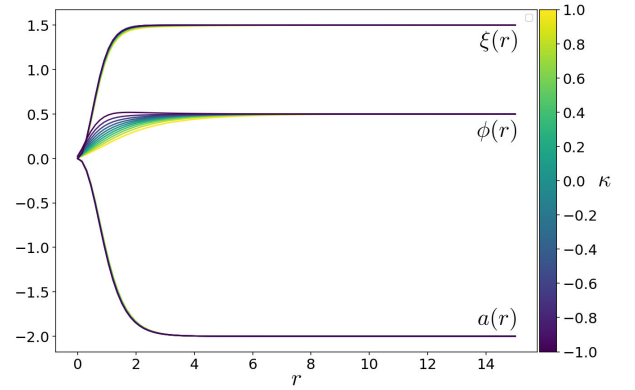


FIGURE 7. Solutions for the cosmic string profile functions, with static fields Φ , χ and \mathcal{A}_μ , for the parameter set $v = 0.5, v' = 1.5; \lambda = 0.5, \lambda' = 1; n = 1, n' = 2; h = 0.5, h' = 1$.

At $r \in \mathcal{O}(0.1)$ we observe again a suppression of $\xi(r)$, similar to the lower plot in Fig. 5 (which also refers $n' = 2$ in the presence of \mathcal{A}_μ). We will probe this property further at even larger values of $|n'|$.

Let us finally return to the aforementioned scenario where we consider this model as a subset of the $SO(10)$ GUT. In this case, the couplings h and h' are fixed by Eq. (3), which also implies a specific ratio between the winding numbers,

$$n' = -5n. \quad (14)$$

(There are other conventions in the literature, where Y' differs by a constant factor, but relation (14) does not depend on it.) This relation also takes us to examples of a large winding number, which we have not addressed so far.

Figures 8 and 9 refer to the parameters

$$\begin{aligned} v = 0.5, v' = 1, \quad \lambda = 1, \lambda' = 1, \\ h = 0.5, h' = -2.5. \end{aligned} \quad (15)$$

Figure 8 assumes the winding numbers $n = 1, n' = -5$, while Fig. 9 addresses the even more exotic case $n = -2$,

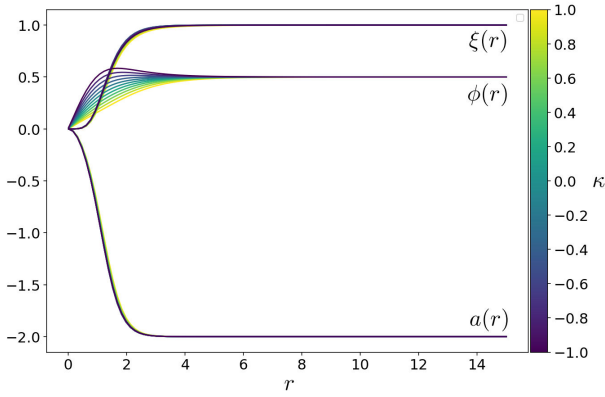


FIGURE 8. Solutions for the cosmic string profile functions, for static fields Φ , χ and \mathcal{A}_μ , for the parameter set $v = 0.5$, $v' = 1$; $\lambda = 1$, $\lambda' = 1$; $n = 1$, $n' = -5$; $h = 0.5$, $h' = -2.5$.

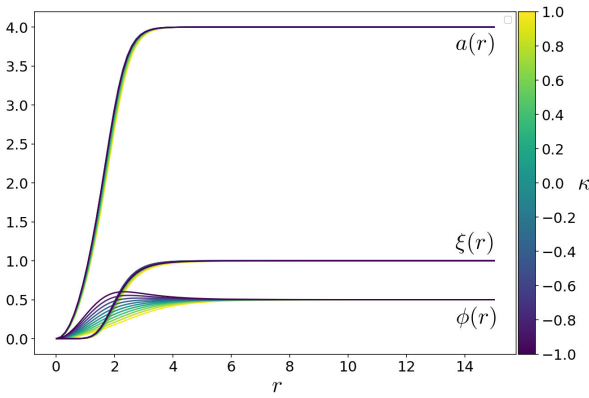


FIGURE 9. Solutions for the cosmic string profile functions, for static fields Φ , χ and \mathcal{A}_μ , for the parameter set $v = 0.5$, $v' = 1$; $\lambda = 1$, $\lambda' = 1$; $n = -2$, $n' = 10$; $h = 0.5$, $h' = -2.5$.

$n' = 10$ (which is certainly unstable under quantum fluctuations). This entails larger absolute values of $a(r)$ than in the previous plots, with $a(r \rightarrow \infty) = -2$ and 4 , respectively. We did not encounter any conceptual or numerical difficulties in dealing with these extraordinary cases.

These scenarios of strong windings of the χ -field confirm previous observations, now in an amplified form. At small r , the χ -profile function $\xi(r)$ is kept close to zero, in a range which grows monotonically with $|n'|$; for $|n'| = 10$ this range extends up to $r \gtrsim 1$.

Moreover, these plots further confirm that the overshooting effect of $\phi(r)$ can also occur in the case with $U(1)_{Y'}$ gauge symmetry. The comparison with Fig. 7 shows that also this effect is enhanced by an increasing value of $|n'|$.

Part of the plots in this section include some curves, which do not fulfill the conditions (9), in particular μ^2 or μ'^2 may turn positive, but we do not observe discontinuities in the set of profile functions when this happens.

5. Summary and conclusions

We have studied an extension of the Standard Model, where the exact $B - L$ conservation is explained by a $U(1)_{Y'}$ gauge symmetry. Gauge anomalies are avoided by adding a right-handed neutrino ν_R to each generation. ν_R obtains an individual mass term when we add a 1-component additional Higgs field χ , with quantum number $(B - L)_\chi = 2$, and use it to build a Majorana-Yukawa term $\propto \chi \nu_R^T \nu_R$. For the standard Higgs field Φ and for χ we assume (renormalizable) quartic potentials — with negative quadratic terms that imply spontaneous symmetry breaking — as well as a term $-\kappa \Phi^\dagger \Phi \chi^* \chi$.

We then studied the coupled field equations of Φ and χ and the $U(1)_{Y'}$ gauge field \mathcal{A}_μ . In particular, we made an ansatz for cosmic string solutions, and applied numerical methods to obtain the radial profile functions with a variety of winding numbers. This analysis also includes the case where this model is considered part of the $SO(10)$ GUT, such that the winding numbers of Φ and χ , n and n' , are related as $n' = -5n$. Since $n, n' \in \mathbb{Z}$, this requires a large value of $|n'|$.

Taking the VEV of Φ as a reference to fix the energy scale suggests that the cosmic strings that we obtain are very thin, typically with radii $r \in \mathcal{O}(10^{-3})$ fm. The solutions that we found do not lead to any objection against the possible existence of such (hypothetical) cosmic strings.

In some cases we compared the Higgs field profiles in the presence and absence of the \mathcal{A}_μ gauge field. The difference tends to be modest, but involving \mathcal{A}_μ further reduces the radii of the cosmic strings.

Also the Φ - χ coupling constant κ has only a mild influence on the solutions. Its impact is most manifest in the regime of about half of the cosmic string radius, where the profile functions have their maximal slopes, and it mainly affects the Φ -profile.

Increasing winding numbers, in particular the increase of $|n'|$, keeps the profile function of χ close to zero at very small r . This effect was systematically observed: $n' \neq 0$ implies $\chi(r = 0) = 0$, and increasing $|n'|$ keeps $|\chi|$ small next to the core of a cosmic string.

Originally we were interested in the possibility of “coaxial cosmic strings”, where the profile functions of Φ or χ would be negative in some range inside the cosmic string. This would have been a novelty in the literature, but an extensive search did not lead to any solution of this kind.

We did, however, find the opposite behavior: in some cases, the standard Higgs profile “overshoots”, *i.e.* inside the string it can take a value, which is larger than its VEV far from the cosmic string.

Acknowledgments

We are indebted to Eduardo Peinado, João Pinto Barros and Uwe-Jens Wiese for instructive discussions. We

thank the organizers of the XXXV *Reunión Anual de la División de Partículas y Campos* of the *Sociedad Mexicana de Física*, where this talk was presented by VMV. This work

was supported by UNAM-DGAPA through PAPIIT project IG100219, “Exploración teórica y experimental del diagrama de fase de la cromodinámica cuántica”, and by the Consejo Nacional de Ciencia y Tecnología (CONACYT).

-
1. H. Fritzsch and P. Minkowski, Unified interactions of leptons and hadrons, *Ann. Phys. (NY)* **93** (1975) 193, [https://doi.org/10.1016/0003-4916\(75\)90211-0](https://doi.org/10.1016/0003-4916(75)90211-0).
 2. W. Buchmüller, C. Greub and P. Minkowski, Neutrino masses, neutral vector bosons and the scale of $B - L$ breaking, *Phys. Lett. B* **267** (1991) 395, [https://doi.org/10.1016/0370-2693\(91\)90952-M](https://doi.org/10.1016/0370-2693(91)90952-M).
 3. H. Weigel, M. Quandt and N. Graham, Stable charged cosmic strings, *Phys. Rev. Lett.* **106** (2011) 101601, <https://doi.org/10.1103/PhysRevLett.106.101601>.
 4. V. Muñoz-Vitelly, The structure of cosmic strings for a U(1) gauge field related to the conservation of the baryon-number minus lepton-number, M.Sc. thesis, Universidad Nacional Autónoma de México, in preparation.
 5. N. Kopnin, Theory of Nonequilibrium Superconductivity, Oxford University Press, 2001. A. A. Abrikosov, Type II Superconductors and the vortex lattice, Nobel Lecture, 2003, <https://www.nobelprize.org/uploads/2018/06/abrikosov-lecture.pdf>.
 6. T. W. K. Kibble, Topology of cosmic domains and strings, *J. Phys. A: Math. Gen.* **9** (1976) 1387, <https://iopscience.iop.org/article/10.1088/0305-4470/9/8/029>.
 7. T. Charnock, A. Avgoustidis, E. J. Copeland and A. Moss, CMB constraints on cosmic strings and superstrings, *Phys. Rev. D* **93** (2016) 123503, <https://doi.org/10.1103/PhysRevD.93.123503>.
 8. B. P. Abbott *et al.* (LIGO and Virgo Collaborations), Constraints on cosmic strings using data from the first Advanced LIGO observing run, *Phys. Rev. D* **97** (2018) 102002, <https://doi.org/10.1103/PhysRevD.97.102002>.
 9. R. H. Brandenberger, A.-C. Davis and M. Trodden, Cosmic strings and electroweak baryogenesis, *Phys. Lett. B* **335** (1994) 123, [https://doi.org/10.1016/0370-2693\(94\)91402-8](https://doi.org/10.1016/0370-2693(94)91402-8).
 10. M. James, L. Perivolaropoulos and T. Vachaspati, Detailed stability analysis of electroweak strings, *Nucl. Phys. B* **395** (1993) 534, [https://doi.org/10.1016/0550-3213\(93\)90046-R](https://doi.org/10.1016/0550-3213(93)90046-R).
 11. E. Witten, Superconducting Strings, *Nucl. Phys. B* **249** (1985) 557, [https://doi.org/10.1016/0550-3213\(85\)90022-7](https://doi.org/10.1016/0550-3213(85)90022-7). J. P. Ostriker, A. C. Thompson and E. Witten, Cosmological Effects of Superconducting Strings, *Phys. Lett. B* **180** (1986) 231, [https://doi.org/10.1016/0370-2693\(86\)90301-1](https://doi.org/10.1016/0370-2693(86)90301-1).
 12. M. B. Hindmarsh and T. W. B. Kibble, Cosmic Strings, *Rep. Prog. Phys.* **58** (1995) 477, <https://iopscience.iop.org/article/10.1088/0034-4885/58/5/001>.
 13. A. Vilenkin and E. P. S. Shellard, Cosmic Strings and Other Topological Defects, Cambridge University Press, 2000.
 14. J. A. García-Hernández, The profile of non-standard cosmic strings, M.Sc. thesis, Universidad Nacional Autónoma de México, in preparation